

Edition 10 20th June 2025

IN THE LOOP



Teaching... Learning and Leadership



Acknowledgement to Country

We are learning on Wurundjeri Country and in the spirit of reconciliation, Lalor North Primary School acknowledges the Traditional Custodians of the land on which we are learning. We pay our respects to their Elders past, present and emerging and extend that respect to all Aboriginal and Torres Strait Islander peoples.



Important Dates

Week 10, Term 2

Tuesday 24th June – Macedonian Storytime 9.30am–10.30am

Tuesday 24th June – School Council

Wednesday 25th June – Playgroup 9am–10am

Thursday 26th June – Breakfast Club 8.15am–8.45am

Friday 27th June – Interschool Sports

Friday 27th June – Teddy Bears Picnic – Preps

Friday 27th June – Assembly

Week 11, Term 2

Tuesday 1st July – Macedonian Storytime 9.30am–10.30am

Wednesday 2nd July – Reports Go Live

Wednesday 2nd July – Playgroup 9am–10am

Thursday 3rd July – Breakfast Club 8.15am–8.45am

Thursday 3rd July – Pyjama Day

Friday 4th July – End of Term 2, 2.00pm Dismissal

Friday 4th July – Newsletter Released

Week 1, Term 3

Monday 21st July – First Day Term 3

Monday 21st July – Education & Policy Subcommittee 5pm

Tuesday 22nd July – Macedonian Storytime 9.30am–10.30am

Wednesday 23rd July – Playgroup 9am–10am

Wednesday 23rd July – Finance & Fundraising

Thursday 24th July – Breakfast Club 8.15am–8.45am

Thursday 24th July – Facilities Subcommittee 10am

Friday 25th July – Newsletter Released

Our School Values

Honesty

We communicate openly and work together to solve problems. By demonstrating honesty and acting with integrity we build trust, which enables us to collaborate, to take greater risks with our learning and to be more resilient when things go wrong.

Respect

We respect ourselves, our school and each other, and understand that our attitudes and behaviour have an impact on the people around us.

Unity

We have many languages, come from many backgrounds and are a school of many differences, but we speak with one voice, as one school. We develop a sense of connection and belonging within each part of our school, and across the whole school.

Success

We help each other learn so that everyone experiences success every day. Success means doing new things, learning new skills, finding new ways of thinking and solving interesting, complex and challenging problems.

Resilience

We know trying new things, experiencing challenges and bouncing back from adversity are central to life and to learning. Only by building our resilience can we experience strong levels of growth.

Principal's Message

Dear families,



As we have almost reached the end of the term, I want to take a moment to celebrate the wonderful teaching and learning happening across our school. Our classrooms have been alive with curiosity, creativity, and critical thinking. Whether it's students tackling challenging maths problems, crafting thoughtful narratives, or engaging in hands on science investigations, the commitment to learning is stronger than ever. Our teachers continue to innovate and adapt, ensuring every child is supported and inspired.

Equally exciting has been the overwhelming success of our new **Gaga Pit!** Since its installation, it has quickly become a favourite during recess and lunch breaks. Students of all ages are joining in, playing respectfully, taking turns, and demonstrating great sportsmanship. It's been a wonderful to see such positive, active engagement during playtime, and the Gaga Pit has not only promoted physical activity but also helped build friendships and a strong sense of community.



Thank you to all who contributed to fundraising and making the Gaga Pit a reality as your support has created a space that brings joy to our students every single day!

Website Update

We're excited to share that our school website is undergoing some updates to better reflect the vibrant learning community at our school. The new content makes it easier for families to access important information, upcoming events, and updates from across the school.



You'll now find refreshed content showcasing our programs, including our bilingual and wellbeing initiatives, as well as improved navigation to key sections such as newsletters, policies, and enrolment information. We encourage all families to visit the website regularly to stay informed and connected with what's happening at school.



Safety at School

At our school, the safety and wellbeing of every child is our highest priority. We are committed to upholding the **Child Safe Standards** and ensuring a culture where students feel safe, respected, and supported in all areas of their school life. These standards guide our policies, practices, and decision making, and they are embedded in the way we interact with our students, staff, and families.

A key part of this commitment is fostering a school environment built on respectful relationships and responsible behaviour. **We expect all members of our school community** – students, staff, parents, and carers – to contribute to a safe and supportive atmosphere where everyone is treated with kindness and dignity. This includes how we speak to one another in person, via email, and on school grounds.

Child Safe Standards and Social Media



It is also important to remember that this respectful approach extends to our online presence. Social media platforms are not the appropriate space to discuss school matters, especially those involving students or staff. If you have concerns or questions, we encourage you to speak directly with school leadership or your child's teacher. Working together in a constructive and respectful manner ensures that we can resolve issues thoughtfully and maintain a strong partnership between school and home.

Changes to Mathematics Reporting in 2025

Looking ahead, there will be some important updates to the way we report on Mathematics achievement from Semester 2 onwards, in line with the Victorian Curriculum F-10 Version 2.0.

The most noticeable change will be the introduction of a **single aggregated score** for Mathematics. This means families will see one overall teacher judgment reflecting a student's achievement across the subject, rather than separate strands.

To support this shift, our teachers have been actively involved in professional learning to deepen their understanding of the revised curriculum and enhance assessment practices. We're also increasing opportunities for moderation across our bilingual and mainstream streams to ensure consistency and clarity in our judgments.



Special Lunch Day – A Hit!

Our Special Lunch Day was a real hit. Our students really enjoyed the special lunch... there was so much excitement as almost every child received one. Students that were absent had their special lunch sent home with a sibling or picked up by a parent. A huge thank you to all the parents that volunteered their time. We really appreciate your energy, support and time spent.



School Reports

New Complaints Policy

School council will be consulting on policies as we update some of the policies as a cycle of review. The Complaints Policy is one of the policies that has changed, and we are currently working on it and take it to the next council meeting. It will be on our website by the end of term.

As part of our commitment to continuous improvement and open communication, we are pleased to introduce our **new Complaints Policy**, designed to ensure that all members of our school community feel heard, respected, and supported.

Understanding the Difference:

Concerns or Complaints. Which one is it?

We recognize that issues may arise from time to time, and it's important to understand how best to raise them.

- **A concern** is a matter that can often be resolved quickly and informally. These are typically minor issues or misunderstandings that may be addressed by speaking directly with the relevant staff member, such as a teacher or administrator.
- **A complaint**, on the other hand, is a more serious issue or one that has not been resolved satisfactorily through informal channels. Complaints follow a formal process to ensure they are investigated thoroughly and fairly. This can take time.

Why This Matters...

This new policy provides a **clear, consistent, and transparent process** for managing concerns and complaints. It outlines:

- How to raise a concern informally
- When and how to submit a formal complaint
- Expected response times
- Steps for escalation if necessary



We encourage families and community members to **first raise concerns informally**, as many issues can be resolved quickly through open and respectful communication. However, when a formal approach is needed, our policy ensures there is a structured and supportive process in place.

Where to Find the Policy...

The full Complaints Policy is available on our school website by the end of term and printed copies are available in the school office upon request. Staff are also available to guide you through the process if needed.

We believe this policy will help strengthen our school community by encouraging openness, clarity, and mutual respect. Thank you for working with us to maintain a positive and productive learning environment for all.

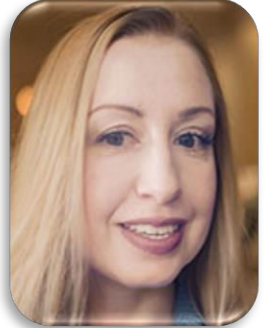
Elizabeth Bryan, Amanda Lee and Kim Rotondi



Exciting News – Our Principal Nominated for Prestigious Education Award!

We are thrilled to share some wonderful news with our school community: Our Principal, Ellie, has been nominated for the 2025 Victorian Education Excellence Awards (VEEA) in the Outstanding Primary Principal category!

The VEEA recognises outstanding staff in Victorian Government Schools and celebrates the incredible work being done to support students and improve learning outcomes across the state. Ellie's nomination is a remarkable achievement and a testament to her dedication, leadership, and passion for making a lasting difference in the lives of our students, families, and staff.



Since joining Lalor North Primary School, Ellie has led a range of initiatives aimed at building a supportive, inclusive, and high-performing learning environment. Her unwavering focus on student success, wellbeing, and strengthening our connection with the community has had a powerful and lasting impact.

In her role on the Bilingual Principals' Executive Committee, Ellie has also been a strong advocate for bilingual education across Victoria. She has worked to streamline the VIT registration process for international language teachers which is an essential step in ensuring qualified educators who are available to deliver high-quality bilingual programs across the state.

Ellie's leadership has driven significant improvements to our school's physical environment, culture, and academic programs. She has devoted countless hours of her own time to secure additional funding and grants to support this vital work. Her efforts have been widely recognised across the Department of Education's North West Victoria Region and the Whittlesea Network of Schools.

At the heart of all Ellie's work is one clear vision: keeping students at the centre of every decision. Our leadership team and staff are proud to support and share in that vision.

Winners of each VEEA category receive professional development grants of up to \$25,000 to continue driving excellence and innovation in education.

We are incredibly proud of Ellie for receiving this nomination for Outstanding Primary Principal of the Year'. It is a well-deserved form of recognition and we are grateful for her inspiring leadership.

Layla M, Wattle 8 - "Ms Bryan helps everyone do the right thing. She talks to children in her office. She's a kind person"

Mihaela, Banksia 8 "Ms Bryan is very kind. She's helpful. If someone's mad she can help them and solve problems easily"

Savannah, Wattle 5 "Ms Bryan is the principal of our school. She makes all the rules. She gave us a new playground, a new Gaga pit and a new sandpit. She's filled with passion"

Naya, Wattle 7 "Ms Bryan looks pretty and has a nice voice. She's very friendly to all the children"

Aaruk Wattle 5 "Ms Bryan bought us a new sandpit, and a gaga pit. The gaga pit is so much fun. She's kind"

Christopher Banksia 8 "Ms Bryan manages the school. She's very kind and calm in situations. She spends the fundraising money to organise fun things for our school"

FUNDRAISING

Our school is working together with our student representative council and the school council to raise funds for lots of exciting projects and improvements.... We are excited about this year already.

| SO FAR HERE IS THE RUN DOWN ON OUR EFFORTS | |
|--------------------------------------------|--------|
| LAST YEAR FUNDS NOT SPENT CARRIED FORWARD | \$5156 |
| CHOCOLATE DRIVE | \$360 |
| COLOUR FUN RUN | \$3982 |
| EASTER RAFFLE | \$2583 |
| MOTHER'S DAY AND SPECIAL PERSON STALL | \$1654 |

Total Raised

\$13,735

\$11,431

Total Spent

Our New Balance

\$2,304

Cadbury Chocolate Fundraiser

The next Lalor North Primary School fundraising event will start on the 23rd of June. Each family will have one box of Cadbury Fundraising Chocolates to bring home. Each box contains 40 chocolates to sell at \$1.50 each. A whole box will cost \$60.



We have a couple of fundraising projects underway and the SRC are planning a Pyjama Day.

We are looking forward to creating an outdoor classroom that our students can use.

There are also several other ideas that are being discussed by the SRC and School Leaders.



From the Office

Some Useful Reminders.....



Year 7 Placement Offers for the 2026 School Year

On Tuesday 1st July, Grade 6 families will be advised of their child's Year 7 placement offer for the 2026 school year which will include a Year 7 Placement Acceptance Slip. The Year 7 Placement Acceptance Slip must be returned to the Lalor North Primary School office by Tuesday 12 August.

Safety Outside the School Gates

We ask for all Parents and Carers to ensure that the school crossings provided by our local council are used at all times when dropping off and picking up students on a daily basis. This is important for the wellbeing of the children and creates good safety habits.

Early Pick Up of students during the day

As school attendance is so crucial, it is preferable that appointments for students be made after school hours wherever possible. However, if an early pick up of students is unavoidable, we request for parents to contact the office with enough time to organize for your children to be brought to the office in time for collection. This is especially the case if you require your child during lunchtime (11.15am-12pm) or recess (2.00pm-2.30pm) when the children are outside playing.

School Saving Bonus Update

The parent/carer online system will close at 11:59 pm on 30 June 2025. Families can continue to use SSB funds until Monday 30 June 2025 to buy uniforms. From this time, if any family have chosen online uniform vouchers, these will expire and all unspent SSB funds will revert to a school activities credit held against the family account for each student.

Diana, Liz and Barbara



Wattle 2
students
Artwork



LNPS School Camps 2025

This year we are very excited to announce that Lalor North PS, for the first time, will be having two school camps! A two-night camp for our Grade 5-6 students and a one-night camp for our Grade 3-4 students. Both camps are amazing school camps and offer a range of fantastic activities and experiences for our students that they will remember for years to come.

Grade 5-6 Camp, Campaspe Downs Adventure Camp, Kyneton

2 nights, Wednesday 19th November - Friday 21st November

PGL Campaspe Downs Adventure Camp is located in country Victoria on the outskirts of Kyneton, near the Macedon Ranges, around an hours drive outside of Melbourne. Our students have been going to Campaspe Downs every 2nd year for several years now and both students and teachers have had many wonderful camping experiences there.

The accommodation facilities and adventure activities at this camp are fantastic

Activities such as the Giant Swing, kayaking, rock climbing, low ropes, raft building and trampolining, test students skills and courage. These activities challenge students to step outside of their comfort zones and try something new, whilst being supported by Campaspe Downs staff, teachers and students. This year's camp promises to be another amazing camping experience for our students

Grade 3-4 Camp, Mt Evelyn Discovery Camp, Mt Evelyn

1 night, Tuesday 2nd December - Wednesday 3rd December

Mt Evelyn Discovery Camp is a wildlife and environmental adventure camp located in the stunning Dandenong Ranges, just an hour's drive from Melbourne. Nestled in a lush, natural setting, this camp offers the perfect blend of outdoor adventure, environmental education, and relaxation.

Cabins sleep between 4 to 8 students and accommodation facilities at Mt Evelyn include air conditioning, central heating, dining room, kitchen lounge area with fireplace and separate male and female accommodation wings.

Adventure activities include the Giant Swing, low ropes, flying fox, bush cooking and many more.

This year's Grade 3-4 camp will be the first camping for many of our Grade 3-4 students and it promises to be an amazing experience.

Notices for school camps will be going home with students shortly. The cost of each camp is also still being worked out and will announced shortly.

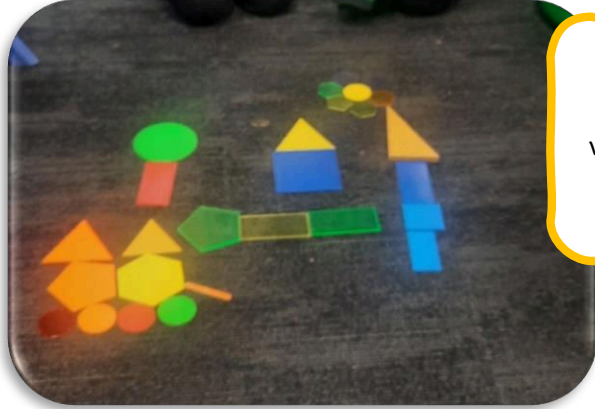


Students in Banksia 3 have been learning about 2D shapes. This week they made pictures using different 2D shapes.

Tree, house, person and sun



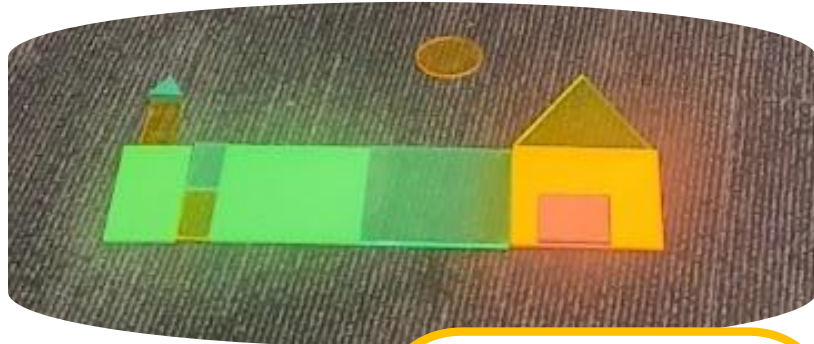
Tree, camper van, house, path, sun



Flowers and grass



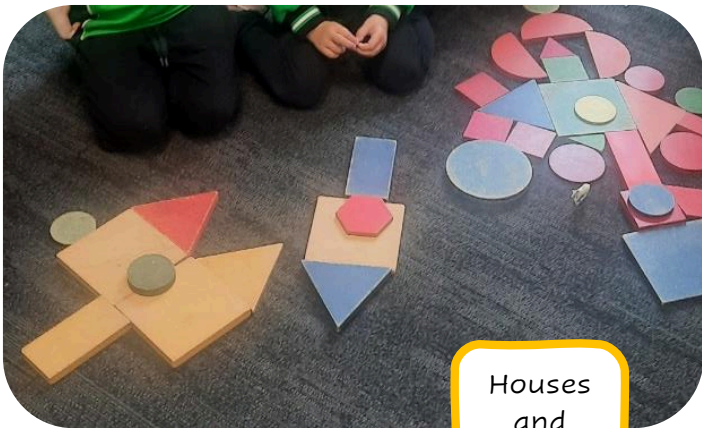
House and path



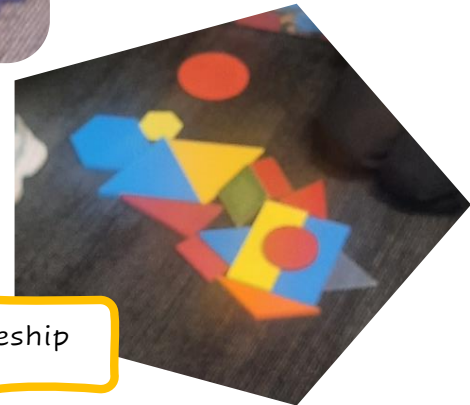
Person and sun



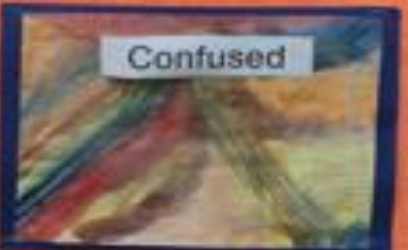
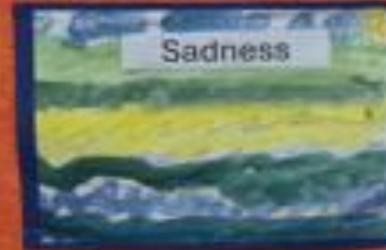
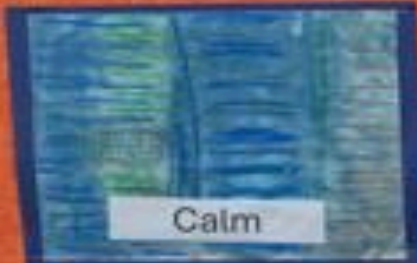
Houses and rocket



Spaceship



Year 3&4 student artwork on display in Wattle





PYJAMA DAY

The Student Representative Council are running a 'Pyjama Day' in the last week of Term 2 to raise funds for our school.

Students are encouraged to wear a pyjama item over their school uniform to rug up during these cold, winter days.

Ideas include:

- Dressing Gowns
- Oodles
- Ugg Boots

Please be mindful that students will likely be outside during lunchtime and recess on this day.

Thursday, 3rd July

Bring a gold coin to support our school.



Grade 6 Students visit to Lalor Secondary College

Tuesday 24th June

We're excited to share that our Year 6 students have been invited to attend a special mid-year concert performance at Lalor Secondary College on Tuesday 24th June from 11.15am - 1.00pm.

This is a wonderful opportunity for students to experience live music and see what's on offer at the local secondary college. The performance will showcase the talents of Lalor Secondary College's music students and provide our Year 6's with a glimpse of high school life.



Students will walk to and from the venue, accompanied by teachers. Please ensure your child wears comfortable shoes and is dressed appropriately for the weather on the day.

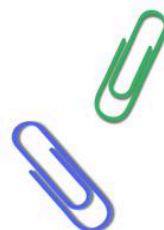
We're looking forward to a fun and inspiring musical afternoon!

Prep Enrolments 2026

Our prep enrolments for 2026 are well on their way with lots of enquiries coming in and tours being booked.

We welcome all parents interested to get in quick and explore all of the great things our school has to offer!

We are looking forward to meeting you all



Thank You

23rd June 2025

Dear Families,

We're about to kick off a fundraising drive to raise money for improving student facilities.

It would be great if you could roll up your sleeves and help. The good news is that this fundraiser is super simple... and delicious.

Cadbury Fundraiser Chocolates

We're asking all families to sell at least one box for us. Feel free to grab another box if you've got lots of hungry buyers lined up!

Tips for selling your treats

- Chocolates are 2 for \$3 whole box costs \$60
- Sell to family members, colleagues, friends or neighbours

Please return your money collected to the Lalor North Primary School Office in the envelope provided no later than Friday 1st August 2025.

Thanks for your support.

Lalor North Primary School

FUNDRAISING.COM.AU

3 Hampers to be awarded to the students who sell the most amount of boxes! 1st, 2nd and 3rd place prizes!



Macedonian Storytime



Macedonian Teacher's Association of Victoria
in collaboration with

Lalor North Primary School

is organising reading sessions for preschool children
aged 1-5 year.



These sessions are free and
will take place at Lalor North
Primary School,

Tuesdays 9:30 - 10:30am
2 Derna Crescent, Lalor 3075



Lalor North
Primary School

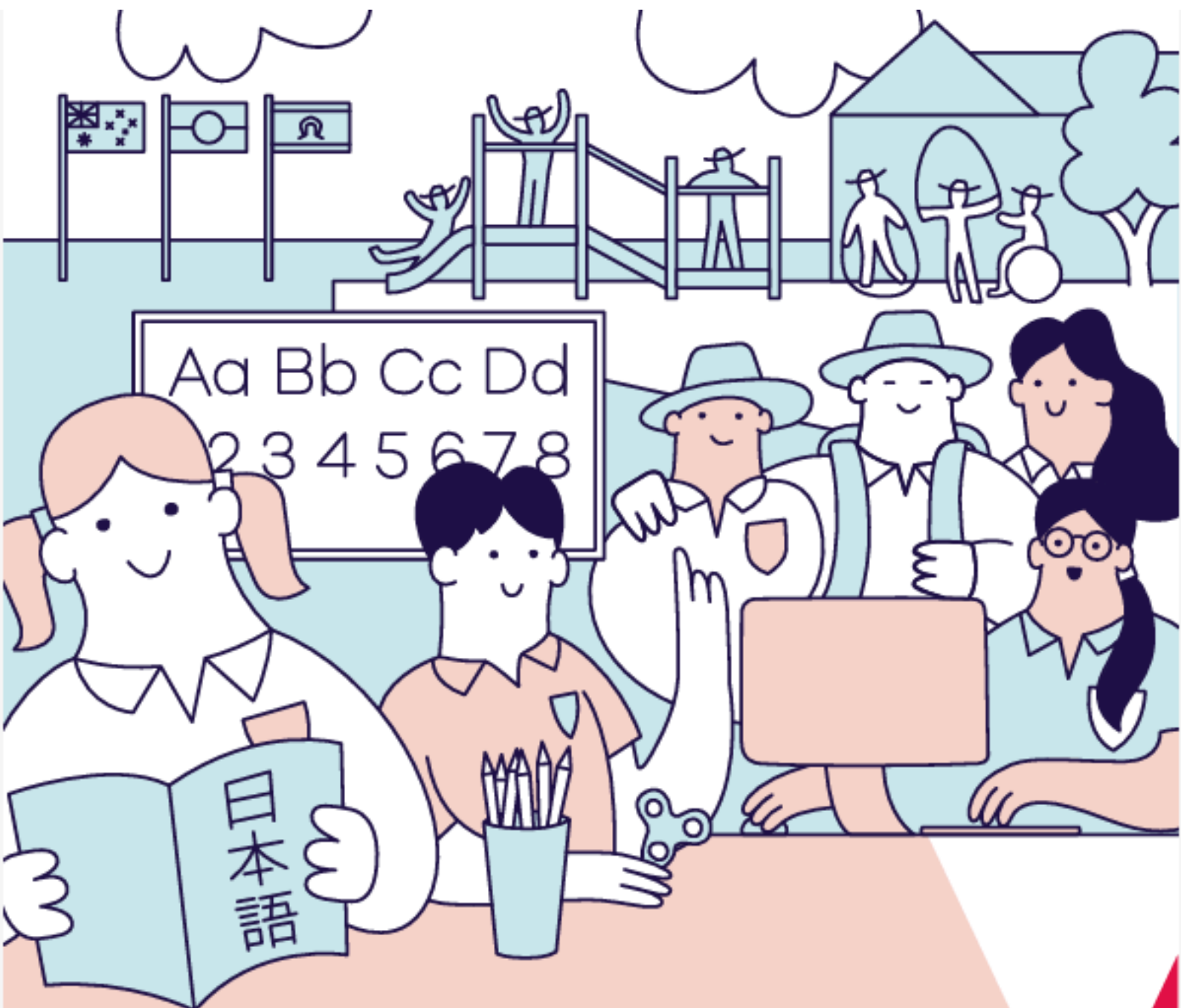


Student of the Week – 6th June

| Room | Student | School Value | Reason for award |
|-----------|-----------------------------|--------------|-------------------------------------------------------------------------------------------------------------------------------------------------------|
| Wattle 2 | Shayaan | Success | For successfully applying his knowledge of letters, sounds and high frequency words to read simple sentences with increasing confidence and accuracy. |
| Wattle 3 | Hassan H | Success | For making a fantastic effort at applying his reading skills and showing his reading ability has improved. Awesome job, Hassan! |
| Wattle 4 | Baran G | Success | For planning and writing a detailed historical narrative based on the history of Australia. Well done, Baran. |
| Wattle 5 | Savannah S | Resilience | For always showing a positive attitude, trying your best and showing incredible growth in your reading skills and comprehension. Well done, Savannah! |
| Wattle 7 | Baani K | Respect | For always showing respect in the classroom. Baani always comes to class with a positive attitude ready to learn! Well done, Baani! |
| Wattle 8 | Roni K | Unity | For always being a good friend and a helpful member of the class. Well done, Roni. |
| Banksia 1 | Anastasia T | Resilience | For having an 'I can try' attitude to give difficult tasks a go. Keep up the positive attitude Anastasia! Well done. |
| Banksia 2 | Nicholas P | Resilience | For recognising the importance of having a positive attitude and giving all tasks a go, even when challenging. Amazing effort Nicholas! |
| Banksia 3 | Mia D | Respect | For showing respect by using her manners, listening carefully to instructions, and trying her best. Well done, Mia! |
| Banksia 4 | Khloe N | Success | For being a five star student, putting 100% in all of her work. Congratulations, Khloe! |
| Banksia 5 | Andrej D | Success | For his engagement and effort put into all tasks across the subjects. He is an absolute superstar. Keep it up, Andrej! |
| Banksia 6 | Lukas R | Success | For writing an excellent historical narrative containing historical words and descriptive phrases. |
| Banksia 7 | Alexis T | Success | For working diligently to complete maths learning tasks in class and at home. |
| Banksia 8 | Ethan C | Success | For working hard, engaging himself in all Maths activities with enthusiasm and completing set tasks successfully. Wonderful work Ethan! |
| Banksia 9 | Anton L | Success | For displaying concentration and diligence in order to complete a great story, which included all the features of a narrative. Great Job Anton! |
| PE | | | |
| ART | Wattle 5 | Unity | For the way they work as a team, offering assistance to each other when working on difficult tasks in Art. Awesome! |
| ITALIAN | | | |
| STEAM | Harry C Wattle 2 | Resilience | For independently completing the coding tasks in STEAM class on time. Well done, Harry! |

Student of the Week – 13th June

| Room | Student | School Value | Reason for award |
|-----------|----------------|--------------|----------------------------------------------------------------------------------------------------------------------------------------------------------------|
| Wattle 2 | Leon N | Resilience | For taking part in learning with some independence. Keep it up, Leon! |
| Wattle 3 | Jerome M | Success | For trying hard during reading sessions to answer questions related to the main idea. Well done, Jerome! |
| Wattle 4 | Amen M | Success | For challenging himself during math sessions and completing multi step worded problems related to the duration of time. Well done, Amen! |
| Wattle 5 | Aleen M | Success | For modelling your part, part, whole knowledge in the mathematics tasks completed this week, to find the missing value in a number sentence. Well done, Aleen! |
| Wattle 7 | Huda A | Respect | For always displaying respect in the classroom and on the yard during recess and lunch. What a great role model, Well done, Huda! |
| Wattle 8 | Destiny D | Honesty | For always doing the right thing and showing respect and compassion towards others. |
| Banksia 1 | Dimitri K | Success | For his hard work in Maths lessons. He has now learnt to use different strategies to help him subtract numbers. Well done, Dimitri! |
| Banksia 2 | Petrina G | Success | For using her knowledge of letter sound to write sentences independently, well done! |
| Banksia 3 | Emilia A | Success | For working hard during Macedonian writing sessions and accurately copying all of the words. Well done, Emilia! |
| Banksia 4 | | | |
| Banksia 5 | David A | Success | For doing a great job at adding and subtracting numbers over 100. Keep it up, David!! |
| Banksia 6 | Tiahna W | Success | For excellent results on her Greek spelling test, amazing work Tiahna! |
| | Leon R | Resilience | To acknowledge his significant progress and dedication in learning the Greek language |
| Banksia 7 | Filip L | Respect | For demonstrating respect by listening to teachers and trying his best during the classes. Well done, Filip! |
| Banksia 8 | Luka B | Success | For demonstrating resilience during math class and persistently working towards completing the assigned task. Keep up the good work Luka! |
| Banksia 9 | Ruby J | Respect | For consistently following the school values and being a super role model for her peers. Excellent work Ruby! |
| PE | | | |
| ART | | | |
| ITALIAN | | | |
| STEAM | Class Wattle 4 | Success | For working hard to finish the Young ICT Explorers prototype planning and research ahead of time. Well done, Wattle 4! |



Every day counts

Attending school every day means experiencing what counts - the learning, friendships, fun and opportunities that can shape their future.

Disability Support Circle

For mothers of children with disabilities

We are excited to announce the launch of a dedicated support group tailored for mothers raising children with disabilities based in the Northern suburbs of Melbourne. This initiative aims to provide a safe and understanding space to:

- 💬 Share your experiences
- 🤝 Find emotional support
- 🧠 Learn from others navigating similar paths
- 💡 Get access to local resources and expert advice
- ❤️ Build lasting friendships with moms who get it

So whether your child is newly diagnosed or you've been walking this road for years, this group is for YOU! Come as you are, leave feeling heard, empowered, and supported. ❤️

Join Now

When: Tuesday 8th July 2025

Contact Belinda Toohey to lock in your spot!

Email: director@includingyou.com.au

Phone: 0401 740 300

*Further details including location will be provided
once your spot has been confirmed*



2025 Whole School Assembly Dates. held at 2.45pm

Term 2

Week 8: Friday 27th June

Term 3

Week 2: Friday 1st August

Week 8: Friday 5th September

Term 4

Week 1: Friday 10th October

Week 5: Friday 7th November

Week 9: Friday 5th December



2025 LEARNING SHOWCASE TIMETABLE (AT FRIDAY WHOLE SCHOOL ASSEMBLIES)

Our Learning Showcases are opportunities for all classes and Specialists to share the amazing learning and achievements that is happening in our classrooms with our school community. Showcases (presentations) can involve your whole class, a small group of students, or individual students –it’s entirely up to you! Two showcases per assembly.

| | | | | |
|--------|-----------------------------------------|------------------------------|---------------------------------------|--------------------------------------------|
| Term 1 | Week 7 Fri Mar | PE (KEITH) | B1, B2, B6 (MARIA K) | Natalia and Mateo & Sport Captains |
| | Week 9 Fri 28 th Mar | B1, B6 (CONNIE/YIOTA) | ART (LORENA) | Amen and Orson Art Captains |
| Term 2 | Week 5 Fri 23 rd May | WATTLE 4 (BRE) | BANKSIA 7 (LIZ G) | Katina and Gabriella |
| | Week 10 Fri 27 th June | WATTLE 8 (LINDA) | ITALIAN (TERESA) | Natalia Mateo Italian Captains |
| Term 3 | Week 2 Fri 1 st Aug | WATTLE 2 (DAPHNE) | BANKSIA 3 (JOVANKA) | Amen and Orson |
| | Week 7 Fri 5 th Sept | WATTLE 3 (JESS) | BANKSIA 8 (HELEN) | Katina and Gabriella |
| Term 4 | Week 1 Fri 10 th Oct | BANKSIA 7 (SONJA/VESNA) | WATTLE 5 (ELAINE) | Natalia Mateo |
| | Week 5 Fri 7 th Nov | WATTLE 7 (OLIVIA) | BANKSIA 4 & 5 (LIZ K & MARIA V) | Amen and Orson |
| | Week 9 Fri 5 th Dec | BANKSIA 9 (HELEN/MIRJANA) | STEAM (JAE) | Katina and Gabriella Digi Tech Captains |

RESPECT

our school staff

"I'm going
to **get**
you fired!"






**Be the role model
your child deserves.**



Department
of Education



| Item | | Sizes Available | Price |
|-------------------------------------------------------------------------------------|--------------------------------------------------------------------------------------------------------------------------------------------------------------------|-------------------------------------------------|--------------------|
|  | Summer Dress <i>Bottle green & white</i> | 4 6 8 10 12 14 16 | \$29.00 |
|  | Cotton Back Short Sleeve Polo <i>Emerald with black panels, white piping and black collar with emerald and white stripes (embroidered logo)</i> | 4 6 8 10 12 14 16 Adult sizes 14, 16, 18, 20 | \$35.00 \$38.00 |
|  | Rugby Knit Shorts - Unisex <i>Black</i> | 4 6 8 10 12 14 16 | \$21.00 |
|  | Microfibre Shorts - Unisex <i>Black</i> | 4 6 8 10 12 14 16 Sml - Med - Lge - XL | \$30.00 \$33.00 |
|  | Cotton Back Long Sleeve Polo <i>Emerald with black panels, white piping and black collar and cuffs with emerald and white stripes (embroidered logo)</i> | 4 6 8 10 12 14 16 Adult sizes 14, 16, 18, 20 | \$37.00 \$40.00 |
|  | Hooded Top <i>Black with green sleeves and green insert in hood with black bands with green and white stripes on bands (embroidered logo)</i> | 4 6 8 10 12 14 16 Adult sizes 14, 16, 18, 20 | \$48.00 \$51.00 |
|  | Bomber Jacket <i>Black with green sleeves and black bands with green and white stripes on bands (embroidered logo)</i> | 4 6 8 10 12 14 16 Adult sizes 14, 16, 18, 20 | \$52.00 \$55.00 |
|  | Straight leg Track Pants <i>Cotton/Polyester Black</i> | 4 6 8 10 12 14 16 | \$28.00 |
|  | Fleecy Double knee trackpants with cuff <i>Black</i> | 4 6 8 10 12 14 16 | \$25.00 |
|  | Fleecy straight leg trackpants <i>Black</i> | 4 6 8 10 12 14 16 | \$24.00 |
|  | Waterproof Jacket Fleecy Lined <i>Black</i> | 4 6 8 10 12 14 16 | \$52.00 |
|  | Bucket Hat <i>Black</i> | XSm 53cm Sm 55cm Med 57cm Lge 59cm XLg 61cm | \$12.00 |
|  | School Bag <i>Black</i> | One size | \$45.00 |
|  | Warm Beanie <i>Black</i> | One size fits all | \$12.00 |
|  | Grade 6 Cotton Back S/Sleeve Polo Top - Green/White/Black Special Order Available only Oct/Nov | 4 6 8 10 12 14 16 Adult sizes 14, 16, 18, 20 | \$52.00 \$56.00 |



Lalor North Primary School Uniform

The purposes of the school uniform are to distinguish the school in public, build a school identity, help build an inclusive environment and to provide parents with cost effective and convenient clothing for school.

Lalor North Primary School has a compulsory school uniform. It must be worn at school, on excursions, at sporting activities and any other special occasions where students represent the school. It's important that every student feels comfortable and has a sense of belonging to our learning community while feeling pride about being a member of our school community each school day.

A PLUS SCHOOLWEAR

Northern Regional Uniforms Shop

Address: Unit 3 /30 Heaths Court Mill Park

Contact: [03 9436 4005](tel:0394364005)

Email: info@northernregionaluniforms.com.au

Trading Hours:

Monday: 9.00am – 5.00pm

Tuesday: 9.00am – 5.00pm

Wednesday: 9.00am – 5.00pm

Thursday: 9.00am – 5.00pm

Friday: 9.00am – 3.00pm

Saturday: 9.00am – 12.00pm

Closed Sundays and Public Holidays.

For Online Orders

Website Details: www.aplusschoolwear.com.au



TAKE A PEEK AT TERM 3

Book now with VillageOSHC!

Term 3 is peeking over the horizon, don't let it catch you by surprise!

We're all ready to go for next term, and we wanted to give you a heads up that our super fun on-site Outside School Hours Care is right here when you need it!

Whether you're planning in advance or making last minute adjustments, VillageOSHC is ready to welcome your children into a fresh new term!

Book 24 hours in advance to access the best price for all your OSHC sessions!



Scan the QR Code to Enrol & Book!

1300 366 437

VillageOSHC.com.au



City of
Whittlesea

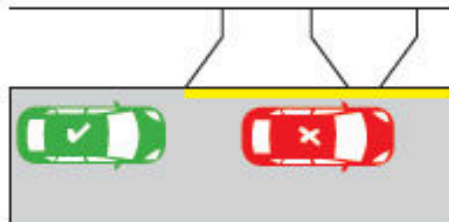
PARKING AND SAFETY AROUND SCHOOLS

Speed



Look out for the reduced speed limit around schools and slow down to improve safety.

Yellow edge line



A driver must not stop on the side of a road marked with a yellow edge line.

Parking/Stopping signage



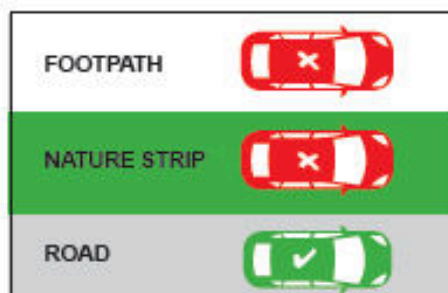
No stopping areas must be kept clear. If times/days are specified, restrictions are only applicable to the specified times/days. You cannot park in a P3 minute area for longer than three minutes.

School crossings



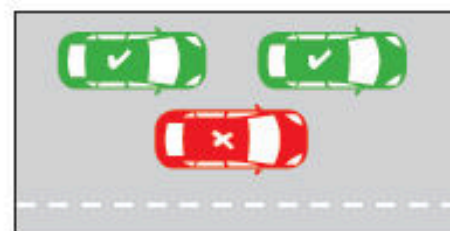
- Look out for flags and Crossing Supervisors
- You must stop for anyone waiting to cross, or who has started crossing
- Please remain stopped until the crossing is clear.

No parking on nature strips/footpaths



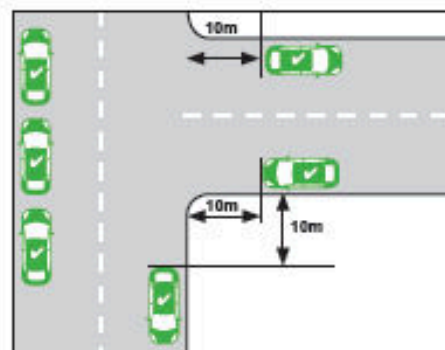
Parking is illegal on nature strips and footpaths.

Double parking



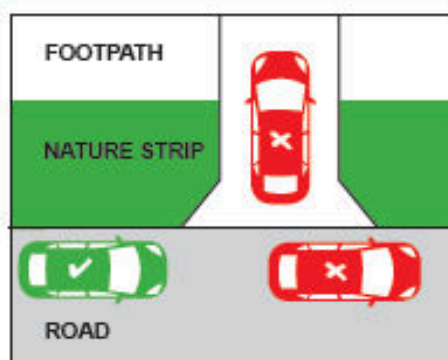
It is illegal to double park at any time. This affects the flow of traffic.

Within 10 metres of an intersection



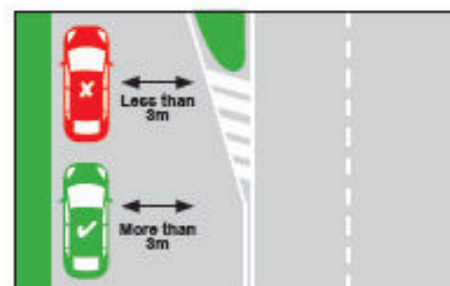
A driver must not stop with any part of their vehicle within 10 metres of an intersection unless signed otherwise.

Stopping across driveways



It is illegal to, stop/park across a driveway unless you stay in the car are there for no more than two minutes and move immediately if required to do so to allow entry or exit by the owner/occupier.

3 metre gap for signage



At least 3 metres must be left between your vehicle and the centre dividing line to allow other vehicles to pass safely and not obstruct traffic.

What can you do to stay safe

- Supervise your children in or near traffic
- Walk or cycle to school with your child
- Respect all road rules, parking signs and instructions from authorities
- Wait on the same side of the street as your child
- Always let your child out of the kerb side of the car.

Free Telephone Interpreter Service

| | | | |
|----------|-----------|------------|-----------|
| العربية | 9679 9871 | Italiano | 9679 9874 |
| Ελληνικά | 9679 9873 | Македонски | 9679 9875 |
| हिंदी | 9679 9879 | 简体中文 | 9679 9857 |

| | | | |
|--------|-----------|------------|-----------|
| ਪੰਜਾਬੀ | 9679 9879 | Tiếng Việt | 9679 9878 |
| தமிழ் | 9679 9879 | Other | 9679 9879 |
| Türkçe | 9679 9877 | | |

A Bug's Life movie night

Friday 4 July • 6pm-9pm

Plenty Ranges Arts & Convention Centre

See the world through the animated eyes of our smallest species while learning about the importance of biodiversity, the benefits of working together towards sustainability, and how small actions can make a big difference.

We've got your creature comforts covered as we continue to celebrate World Environment Day with food and environment-themed entertainment for the kids before the movie.



Come along
for some school
holiday fun! Only

\$5



Scan the QR code to book, or visit
www.whittlesea.vic.gov.au/a-bugs-life



**City of
Whittlesea**

Feel free to bring along
your keep cup and some
cash for coffee and a
Scouts sausage sizzle



City of
Whittlesea



National Tree Day

Connect with your community and put down roots
by helping us plant native trees and wildflowers to
ensure our environment and local animals thrive.

Sunday
27 JULY

10AM – 1PM

Location:
Brunton Park
Conservation Area

Registration point:
176W Everard Road, Mernda

Conditions may be wet and
muddy so make sure you wear
appropriate outdoor clothing
and sturdy shoes.



Scan the
QR code
to register

or visit [whittlesea.vic.gov.au/
National-Tree-Day](https://whittlesea.vic.gov.au/National-Tree-Day)

Bubup Wilam Aboriginal Child and Family Centre



NAIDOC Art Exhibition

Monday 7th July



Join us for a showcase of art, sculpture & more from our children

with a special screening of "Our Warrior"- the story of Robbie Thorpe

**Exhibition starts
6pm**

**Screening to start
7pm sharp**

**MOB tickets
\$6**

**General tickets
\$16**

BOOK TICKETS THROUGH

pracc.com.au/Whats-On/All-Events/NAIDOC-Week-screening

OUR WARRIOR

THE STORY OF ROBBIE THORPE



WWW.OURWARRIORDOCO.COM



Winter holidays

Nerf Battles & Basketball

Join us at Smash X in Epping for action-packed NERF Games! With two sessions split by age, young people can enjoy safe, supervised battles, meet new friends, and burn off some energy. We provide all the gear—just wear comfy clothes and bring your enthusiasm!

MEET **AGES 8-12**
Monday 7 July, 10am-12pm

MEET **AGES 13-18**
Monday 7 July, 12.30pm-2.30pm

MEET
Smash X Epping-143 O'Herns Road, Epping

COST FREE

Chocolate Making & Digital Design Workshop

Explore the art of chocolate making while also diving into the world of digital design. Whether you're a future chef, a budding designer, or just curious to try something new, this workshop offers a unique and engaging experience.

Wednesday 9 July, 10am-2pm

MEET
Whittlesea Tech School-
415 Dalton Road, Epping

COST FREE

Youth Take Over (YTO) at Mill Park Library

Your night, your vibe. YTO is a relaxed evening for young to hang out, get creative, play games, enjoy music, and connect. All with free food in a safe, welcoming space. Perfect for winding down or discovering something new.

Friday 11 July, 6pm-8.45pm

MEET
Mill Park Library - 394 Plenty Road, Mill Park

COST FREE

Movie screening - Superman Legacy

Get ready to soar into action! We're taking over the cinema for a special screening of Superman: Legacy—just for young people aged 12-18. Come dressed as your favourite superhero for a chance to win fun prizes, then sit back and enjoy an epic movie experience.

Friday 11 July, 11am-1.30pm

MEET
Village Cinemas Westfield Plenty Valley -
415 McDonalds Road, Mill Park

COST \$5 Includes: Movie entry and Popcorn

Girls Day Out

A free and fun day just for girls! Join us for games, crafts, challenges, and a whole lot of good vibes.

MEET **AGES 8-12**
Tuesday 15 July, 9.30am-11.30am

MEET **AGES 13-18**
Tuesday 15 July, 12.30pm-3pm

MEET
Mill Park Leisure-33 Morang Drive, Mill Park

COST FREE

NAIDOC Youth Event

Join us for cultural activities, interactive games, and food. It's an opportunity to celebrate and learn about Aboriginal and Torres Strait Islander culture in a welcoming and inclusive environment. Whether you're coming with friends or meeting new people on the day, everyone is welcome.

Wednesday 16 July, 11am-2pm

MEET
Thomastown Aquatic & Recreation Centre -
52 - 54 Main Street, Thomastown

COST FREE

Rewind Time: 2000's Nostalgia!

Get ready to throw it back to the unforgettable era of the 2000s at Rewind Time: 2000s Nostalgia! Bursting with fun, music and early-2000s chaos (the good kind).

Friday 18 July, 5pm-7pm

MEET
Epping Memorial Hall-827 High Street, Epping

COST FREE



To book or for more information scan the QR code

whittlesea.vic.gov.au/youthevents

For more info call ☎ 9217 2170
and ask for the youth team or email
youth@whittlesea.vic.gov.au



youth!